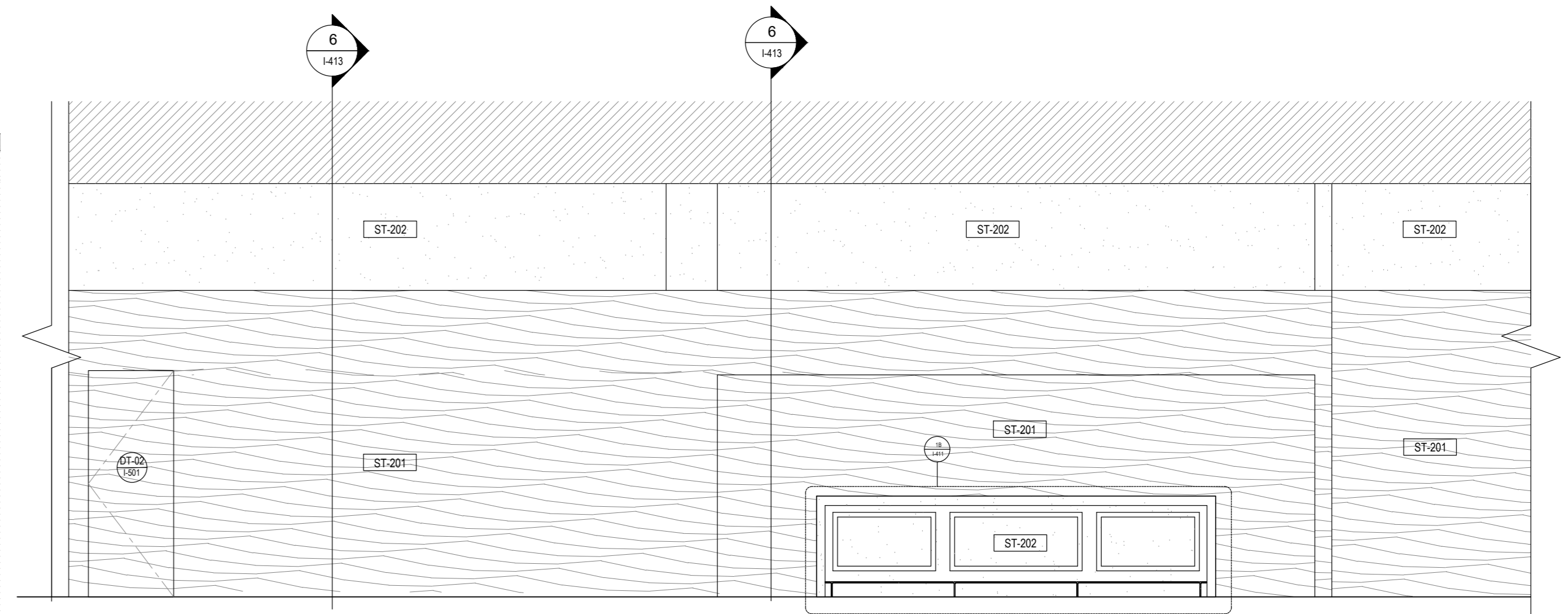
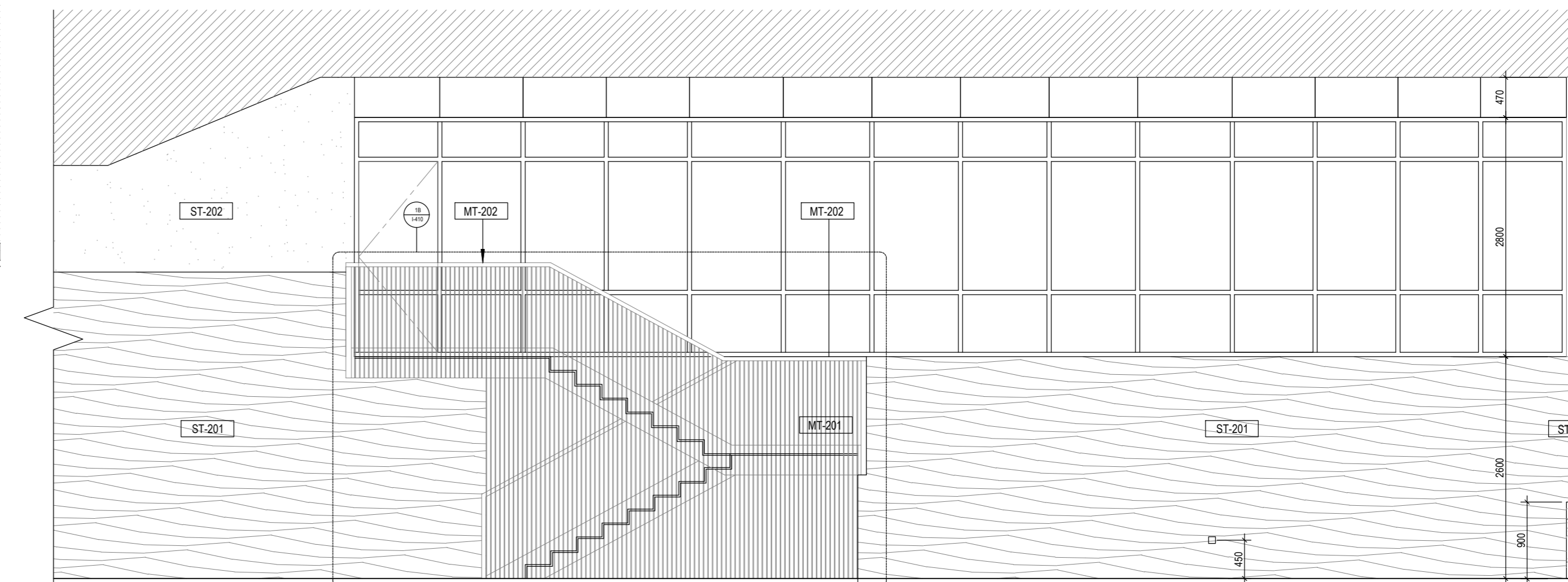


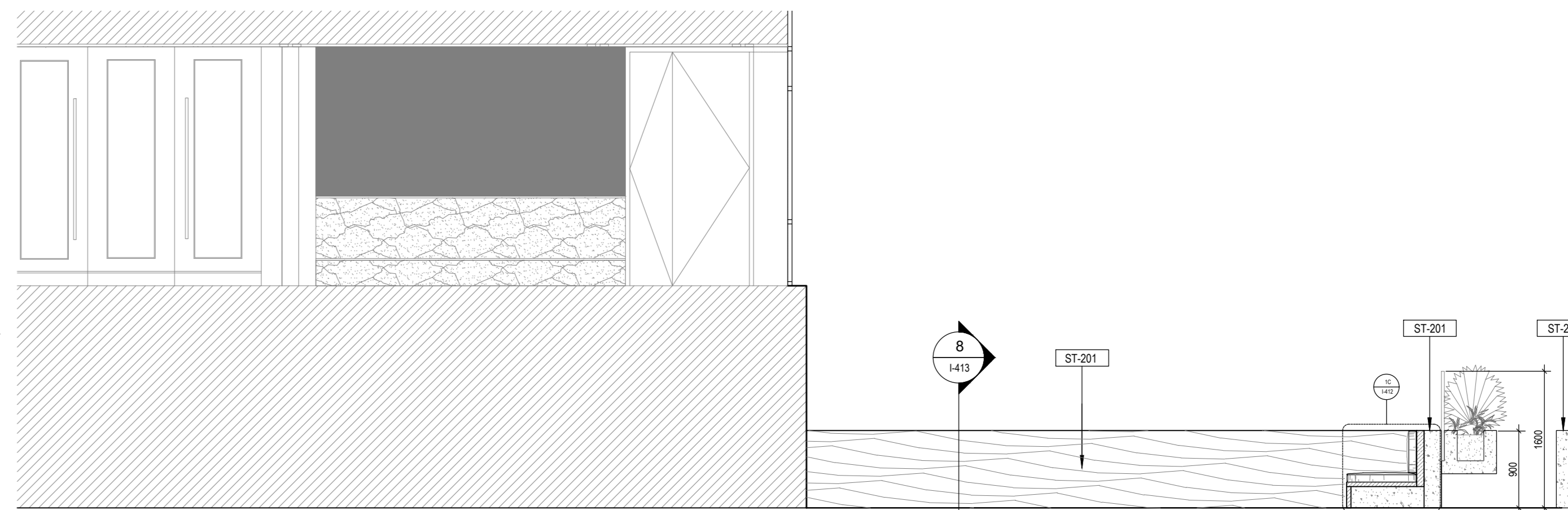
1 TERRACE PLAN  
SCALE 1:50



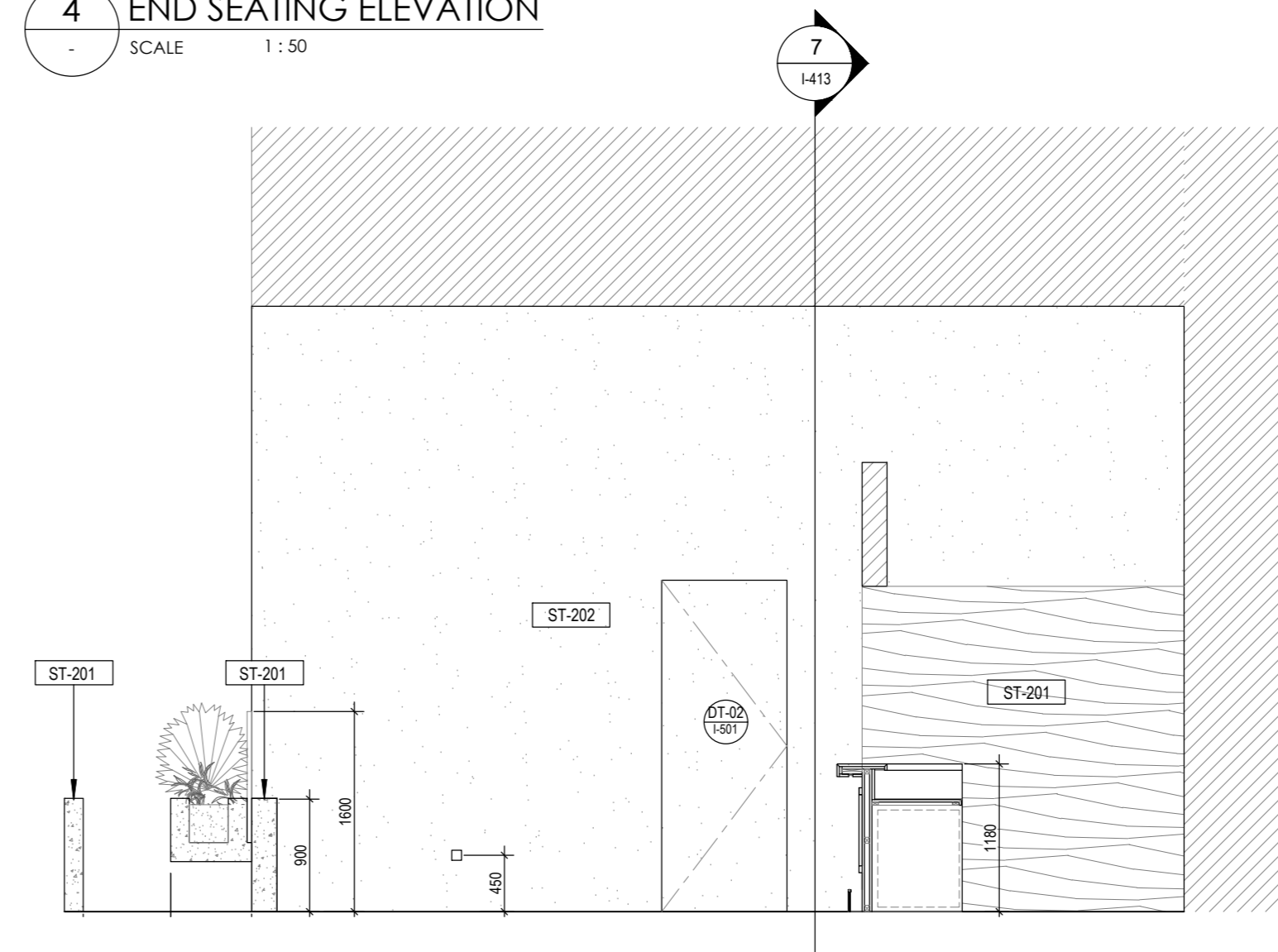
2 BACK WALL ELEVATION  
SCALE 1:50



3 MEETING ROOM ELEVATION  
SCALE 1:50



4 END SEATING ELEVATION  
SCALE 1:50



5 BAR ELEVATION  
SCALE 1:50

**A0** Original Sheet Size

**APPROVAL**

**CLIENT**

**ARCHITECTURAL**

**KEY PLAN**

**NOTES - GENERAL**

- THIS DRAWING IS THE COPYRIGHT OF H+A AND MUST NOT BE REPRODUCED, COPIED OR USED WITHOUT THE BELOW CONSULTANT'S CONSENT.
- DIMENSIONS ARE NOT TO BE SCALED FROM THIS DRAWING. ALL DIMENSIONS ARE IN MILLIMETERS AND LEVELS IN METERS UNLESS NOTED OTHERWISE.
- ANY DISCREPANCIES, EITHER BETWEEN WRITTEN DIMENSIONS AND SITE DIMENSIONS OR WITHIN THESE DRAWINGS SHOULD BE BROUGHT TO THE IMMEDIATE ATTENTION OF THE ARCHITECT BEFORE EXECUTING THE WORKS.
- THIS DRAWING IS TO BE READ IN CONJUNCTION WITH ALL OTHER DOCUMENTATION FORMING THE CONSTRUCTION CONTRACT.
- ALL EXISTING DIMENSIONS / LEVELS ETC. INDICATED ON DRAWINGS ARE TO BE VERIFIED ON SITE.
- CONTRACTOR TO SUBMIT COORDINATED SHOP DRAWINGS FOR APPROVAL AS REQUIRED PRIOR TO COMMENCEMENT OF WORKS AT SITE.

**KEY LEGENDS**

**CEILING SYMBOLS**

**SYMB** DESCRIPTION

- SPRINKLER (WALL MOUNTED BY MEP CONSULTANT)
- WALL SPRINKLER
- A.C. RETURN, WALL MOUNTED GRILL (BY MEP CONSULTANT)
- A.C. SUPPLY, WALL MOUNTED GRILL (BY MEP CONSULTANT)
- FIRE ALARM COMBINED DETECTOR, SOUNDER & STROBE
- FIRE ALARM SMOKE DETECTOR
- FIRE ALARM SOUNDER WITH FLASHER
- PIR PASSIVE INFRARED MOTION DETECTOR, CEILING MOUNTED
- PIR PASSIVE INFRARED MOTION DETECTOR, WALL MOUNTED
- SURFACE MOUNTED VOICE EVALUATION SPEAKER WITH STROBE
- 1X1W/1S LAMP, SEMI RECESSED MAINTAINED SLAVE EXIT LUMINAIRE
- ROUND RECESSED MOUNTED NON MAINTAINED EMERGENCY LIGHTING
- SPRINKLER
- FIRE ALARM GLASS BREAK
- DOME CAMERA
- WIRELESS ROUTER CEILING MOUNTED
- ACCESS PANEL
- EXHAUST FAN

**LIGHTING SYMBOLS**

- CEILING RECESSED DOWNLIGHT
- WALL MOUNTED INTERIOR LIGHT
- HIDDEN LED LIGHT FITTED IN JOINT
- LED STRIP LIGHT
- CEILING MOUNTED PROJECTOR

**POWER SYMBOLS**

- WALL MOUNTED POWER POINT
- 13A SWITCHED FUSED CONNECTION UNIT
- WALL MOUNTED POWER POINT WEATHER-PROOF
- WALL MOUNTED JUNCTION BOX 1 POWER + 1 DATA POINT
- WALL MOUNTED DATA POINT
- TELEVISION POINT DOUBLE RJ45 OUTLET
- 3 COMPARTMENT FLOOR OUTLET BOX WITH 2X13A TWIN SOCKET WITH SPACE FOR 1X TELEPHONE + 2X DATA (COMPUTER + PRINTER) + 1X ANALOG (LINE + ISDN/ADSL/FAX)

**CEILING TYPE LEGEND**

- GYPSUM BOARD, CEILING, NORMAL, AS PER NBS SPEC REF K10
- OPEN METAL MESH, CEILING, AS PER NBS SPEC REF Z10

**FLOOR FINISH LEGEND**

- WF-101 - TIMBER FLOORING, BATT FINISH, AS PER NBS SPEC REF M50
- WF-102 - FITTED CARPET WITH CUSTOMISED PATTERN, AS PER NBS SPEC REF M50
- WF-101 - ENGINEERED TIMBER FLOOR PLANKS
- WF-102 - VENEER WOOD FINISH
- WF-103 - VENEER WOOD FINISH
- WF-104 - METAL TRIM FLOOR
- WF-105 - METAL TRIM AND MESH (CEILING)
- WF-106 - RECESSED CEILING GRID STRUCTURE
- WF-107 - METAL FINISH / COATING
- WF-108 - NORMAL PAINT FINISH
- WF-109 - SPECIAL PAINT FINISH (P/P/PA EFFECT)
- WF-110 - FITTED CARPET (CUSTOMISED PATTERN)
- WF-111 - OPAQUE GLASS
- WF-112 - PLASTERBOARD ON METAL STUD WALL / PARTITION
- WF-113 - PLASTERBOARD ON METAL STUD WALL / PARTITION
- WF-114 - RECESSED CEILING LIGHT
- WF-115 - RECESSED DOWNLIGHT
- WF-116 - TABLE LAMP
- WF-117 - BLACKOUT DRAPES

**JOINTS LEGEND**

- JA-MB-101 - CUSTOM TIMBER STORAGE
- JA-MB-102 - CUSTOM METAL SHELVING

**100% DETAILED DESIGN ISSUE**

NO.	ISSUED FOR 100% DETAILED DESIGN	DATE	BY
1	ISSUED FOR 100% DETAILED DESIGN	24.09.2021	DL
2	ISSUED FOR 100% DETAILED DESIGN	24.09.2021	DL

**OWNER / TENANT:**

RAK HOSPITALITY HOLDING LLC  
7th Floor RAKBANK Head Office  
Jumeirah - Ras Al Khaimah UAE  
PO Box 86000  
www.rakhospitalityholding.com

**DESIGNER:**

H+A  
Tammem House, Level 16,  
Office 1607, Barsha Heights  
Dubai, UAE  
www.h-a-global

**PROJECT NAME**

SHERATON GRAND TBILISI METECHI  
PALACE - MEETINGS BY AT1

**DRAWING TITLE**

MEETING ROOM TERRACE  
DETAIL PLANS

**DRAWN** GHS **CHECKED** KIR **APPROVED** DL

**SCALE** As indicated **DATE** 24.09.2021 **PROJ. No.** 9020

**DRAWING No.** I-404 **REV** A